

East County Education Alliance Summit 2017

Pillars and Pathways

Keynote

Dr. Martha Kanter - Executive Director, College Promise Campaign

East County Education Alliance Summit 2017

Pillars and Pathways

What Have We Done?

Local Initiatives – Amber Hughes, Mary Nishikawa

Past – Establishing Our Partnership



GROSSMONT-CUYAMACA
COMMUNITY COLLEGE DISTRICT

Past – Formalizing Our Partnership



Created data sharing MOU
between
GUHSD & GCCCD

Present – Vision and Mission

Alliance Vision

Fulfilling the promise within each and every East County student.

Alliance Mission

Enriching our community with strong partnerships that guide our students through a world-class education leading to meaningful and fulfilled lives.

Alliance Goals

Goal #1: Inspire Students to Focus on College and

number of students who
engage in a college or career pathway,
from high school well prepared to enter
college.

Collaboration between our Districts Seamless Transition from High School to

institutional capacities of the partnership
curriculum, programs and services, and
financial resources.

College Completion Rates and Outcomes for an Ever-Evolving Workforce

number of students who

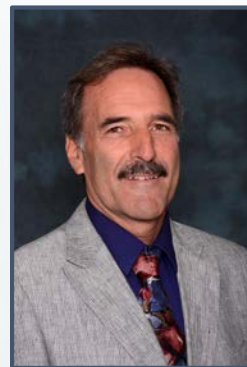
- 3A: Earn a degree or certificate
- 3B: Transfer to a university, and
- 3C: Enter the workforce.



Greg Barr
Clerk



Bill Garrett
President



Edwin Hiel
Member



Debbie Justeson
Member



Elena Adams
Member



Dr. Tim Glover
Superintendent



Dr. Cindy Miles
Chancellor



Jim Kelly
Clerk



Chris Fite
Member



Robert Shield
President



Elva Salinas
Member



Dr. Gary Woods
Vice President



Present – Joint Board Priorities

Joint Board Priorities

1. Continue expansion of our Alliance partnership.
2. Continue to bring college and high school instructors together to promote curricular articulation and alignment to improve students' transition from high school to college and career training.
3. Create new and enhance existing career pathways for students that align with industry standards and needs.
4. Share professional development and resources for instructors, counselors, staff, and administrators to promote their ability to help all students navigate the high school to college pathway.
5. Provide clear and concise data that demonstrate progress and achievements in meeting the goals of the Alliance.
6. Engage the greater East County community, including parents, business, government and general citizenry in supporting the Higher Edge Scholarship and work of the Alliance.

Present – Strengthening Structure

Executive Committee

GCCCD:

Amber Hughes, Cindy Miles, John Valencia, Julianna Barnes, Katrina VanderWoude, Kim Dudzik, Nabil Abu-Ghazaleh, Pat Setzer, Tate Hurvitz

GUHSD:

Kim Patterson, Kimberlee Hedrick, Mary Nishikawa, Paul Dautremont, Terri Sprecco, Theresa Kemper, Tim Glover

Steering Committee

GCCCD:

Aiden Ely, Amber Hughes, Anne Krueger, Christopher Tarman, Cindi Harris, Cindy Miles, Guillermo Colls, Helen Liesberg, Javier Ayala, Jesus Miranda, John Valencia, Julianna Barnes, Katrina VanderWoude, Marsha Gable, Martha Clavelle, Nabil Abu-Ghazaleh, Nemie Capacia, Nicole Jones, Pat Setzer, Paul Carmona, Sally Cox, Tate Hurvitz

GUHSD:

Alan Grulich, Catherine Martin, Eileen Bagg-Rizzo, Mary Nishikawa, Michele Estill, Paul Dautremont, Robyn Wiggins, Teri Sprecco, Theresa Kemper, Tim Glover

Present – Steering Committee

Articulation & Alignment Council

CTE/Career/Adult Ed Team

ESL Team

Math Team

English Team

Dual Enrollment Team

Guidance & Counseling Team

Higher Edge Council

Coordinated Outreach Team

Fundraising & Communications Council

Data & Evaluation Council

Present – Alliance Teams

		GCCCD	GUHSD
Articulation & Alignment		Katrina VanderWoude Pat Setzer	Paul Dautremont
English Team	Leads:	Cindi Harris	Eileen Bagg-Rizzo
	Members:	Carl Fielden, Chuck Charter, Joan Ahrens, Oralee Holder, Sarah Martin, Tania Jabour, Thea Bachmann	Dan Baits, Gladys Uri, Juliet Fraser, Karly Johnstone, Kim Bellaart, Kristen Ciallella, Kristin McLaughlin, Mike Fowler, Shannon Turner, Susan Ehrenfeld
Math Team	Leads:	Nemie Capacia	Tiffany Jokerst
	Members:	Jennifer Denney, Tammi Marshall,	Cherie Douma, Christy McAloney, John Berray, Kelly Hale, Laurie Velarde, Lucas Olivares, Paul Dautremont, Pete Mergens, Tony Camara
ESL Team	Leads:	Guillermo Colls, Helen Liesberg	Michele Estill
	Members:	Chuck Passentino, Sara Ferguson	Doug Martin, Rebecca McMillan
CTE/Career and Adult Ed Pathways Team	Leads:	Javier Ayala	Robyn Wiggins, Teri Sprecco
	Members:	Kate Miller, Larry McLemore Leslie Blanchard, Rita Shamoon	Eileen Bagg-Rizzo, Frank Luera, Heather Peterson, Jeff Wood

Present – Alliance Teams

		GCCCD	GUHSD
Dual Enrollment Team	Leads:	Julianna Barnes Nabil Abu-Ghazaleh	Mary Nishikawa, Theresa Kemper
	Members:	Aaron Starck, Arianne Ahmadian, Alicia Munoz, Amber Hughes, Bill McGreevy, Chuck Charter, Cindy Miles, Courtney Williams, Dee Oliveri, Helen Liesberg, Javier Ayala, John Valencia, Katrina VanderWoude, Lorenze Legaspi, Marsha Gable, Martha Clavelle, Mike Reese, Nemi Capacia, Nicole Jones, Pat Setzer, Aiden Ely, Cheryl Ashley, Sue Rearic, Tate Hurvitz, Wayne Branker, Paul Carmona	Scott Patterson, Tim Glover, Cindy Douglas. James Messina, Jessica Merschtina, Mark Tweet, Mary Nishikawa, Paul Dautremont, Theresa Kemper, Jason Martinez, Kathleen Elwood, Doug Coffin
Guidance and Counseling Team	Leads:	Martha Clavelle Nicole Jones	Mary Nishikawa
	Members:	Courtney Williams, Renee Tuller	

Present – Alliance Teams

		GCCCD	GUHSD
Higher Edge Council	Leads:	Aiden Ely, John Valencia, Marsha Gable	Theresa Kemper
	Members:	Amber Hughes, Courtney Williams, Javier Ayala, Jessica Murguia, Jesus Miranda, John Escobedo, Nicole Jones, Paul Carmona, Tate Hurvitz, Anne Krueger, Erich Foeckler, Heriberto Vasquez, Amaliya Blyumin	Dawn Cuizon, Marc Barlow, Mary Nishikawa, Mike Fowler, Rebecca Vargas-Wilson
Coordinated Outreach Team	Leads:	Nicole Jones, Courtney Williams	Mary Nishikawa
	Members:	Agustin Albarran, Aiden Ely, Amber Hughes, Ari Ahmadian, Diana Barajas, Heriberto Vasquez, Javier Ayala, Jessica Murguia, Jesus Miranda, John Escobedo, John Valencia, Karolia Macias, Larry McLemore, Lorena Ruggero, Marsha Gable, Mike Reese, My-Ling Nguyen, Nichole Middleton, Renee Nasori, Ute Maschke	Mary Nishikawa, Theresa Kemper
High School Liaisons and Principals:		Agustin Albarran, Bill McGreevy, Farina-Hess, Nadra, Javier Ayala, Martha Clavelle, Mike Reese, Nicole Jones, Wayne Branker	David Napoleon, Daniel Barnes, Don Hohimer, Kevin Osborn, Kim Patterson, Kimberlee Hedrick, Laura Whitaker, Marietta Minjares, Mary Beth Kastan, Mike Fowler, Robin Ballarin, Tim Schwuchow

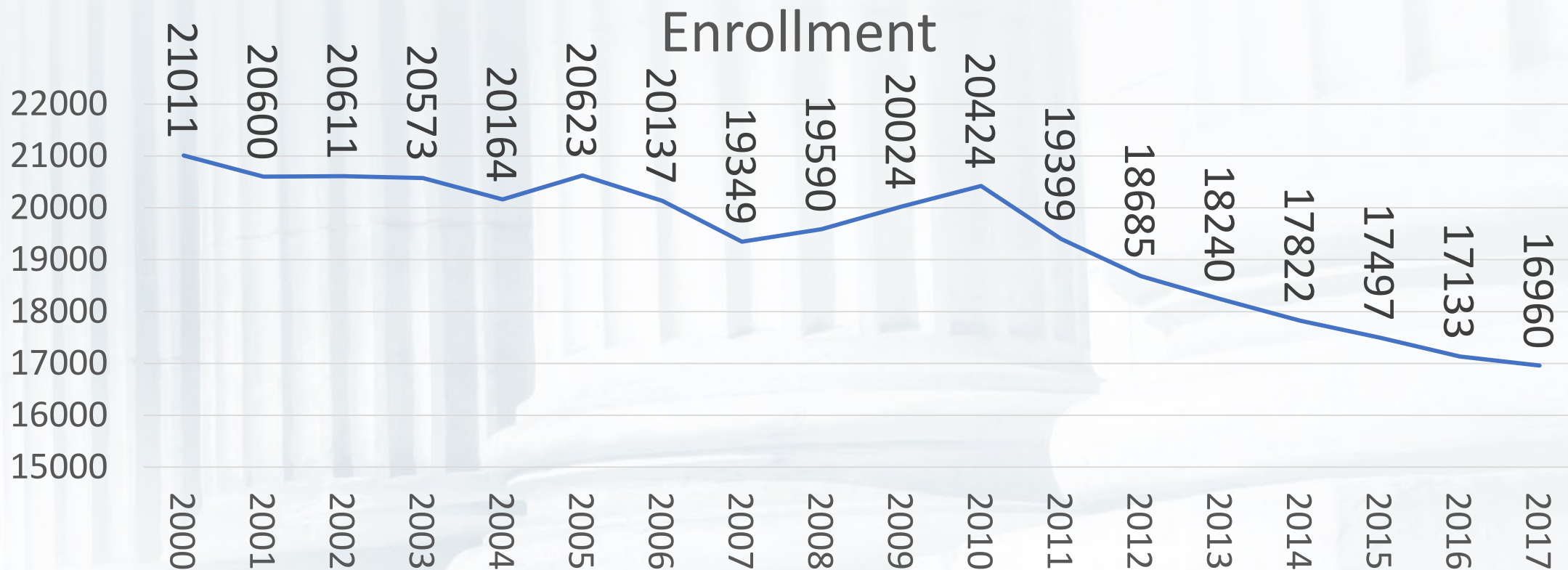
Present – Alliance Teams

		GCCCD	GUHSD
Fundraising & Communications Council	Leads:	Sally Cox Anne Krueger	Catherine Martin
	Members:	Dana Quittner, Kerri Ewing, Lorena Ruggero, John Valencia, Amber Hughes	
Data & Evaluation Council	Leads:	Christopher Tarman	Alan Grulich
	Members:	John Valencia, Leif Christiansen	Maria Simonsen

Who Are OUR Students?

Local Initiatives – Paul Dautremont, Aiden Ely

High School – Historical Enrollment



High School – Free/Reduced Lunch

Total Percentage of Student Receiving Free/Reduced Lunch



High School – Work Permits 2016-2017

- 1738 Work Permits Issued

 - Must be 14 years old

 - Maintain a 2.0 GPA

- Likely are more students working than this

High School – English Learners

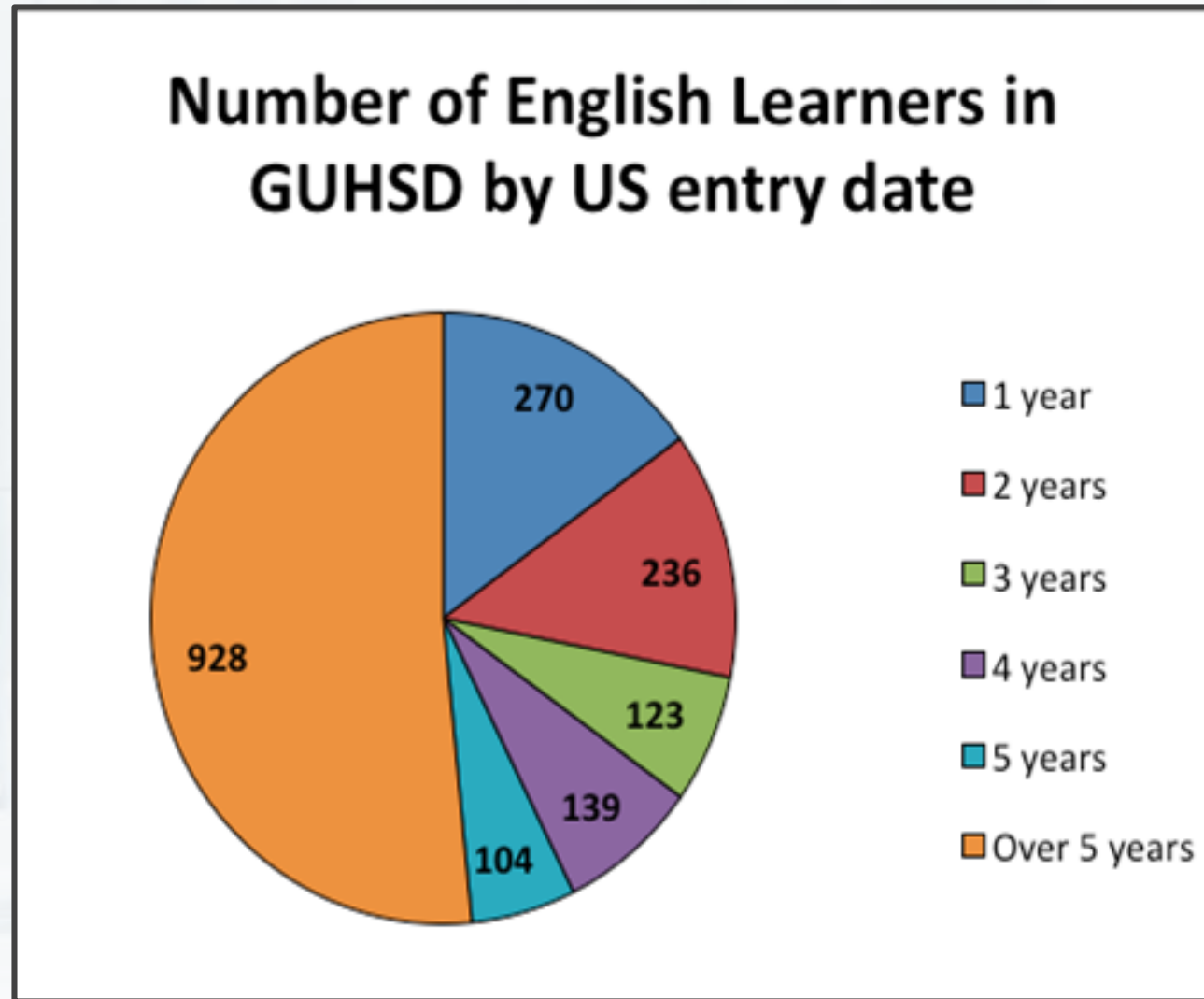
- 1800 English Learners

 - 928 ELs in US schools MORE than 5 years

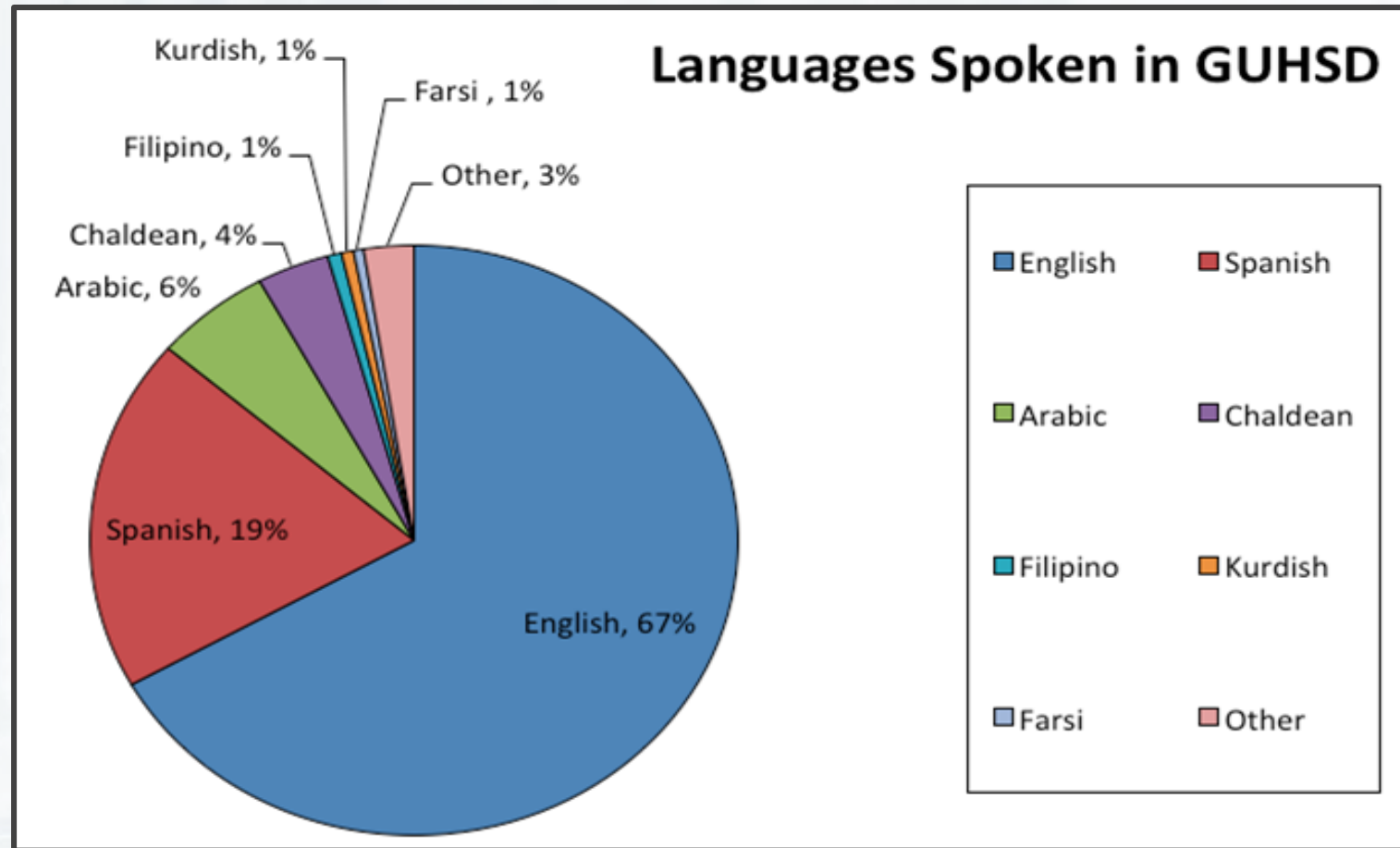
 - 872 ELs in US schools FEWER than 5 years

- 54 Different Languages Represented

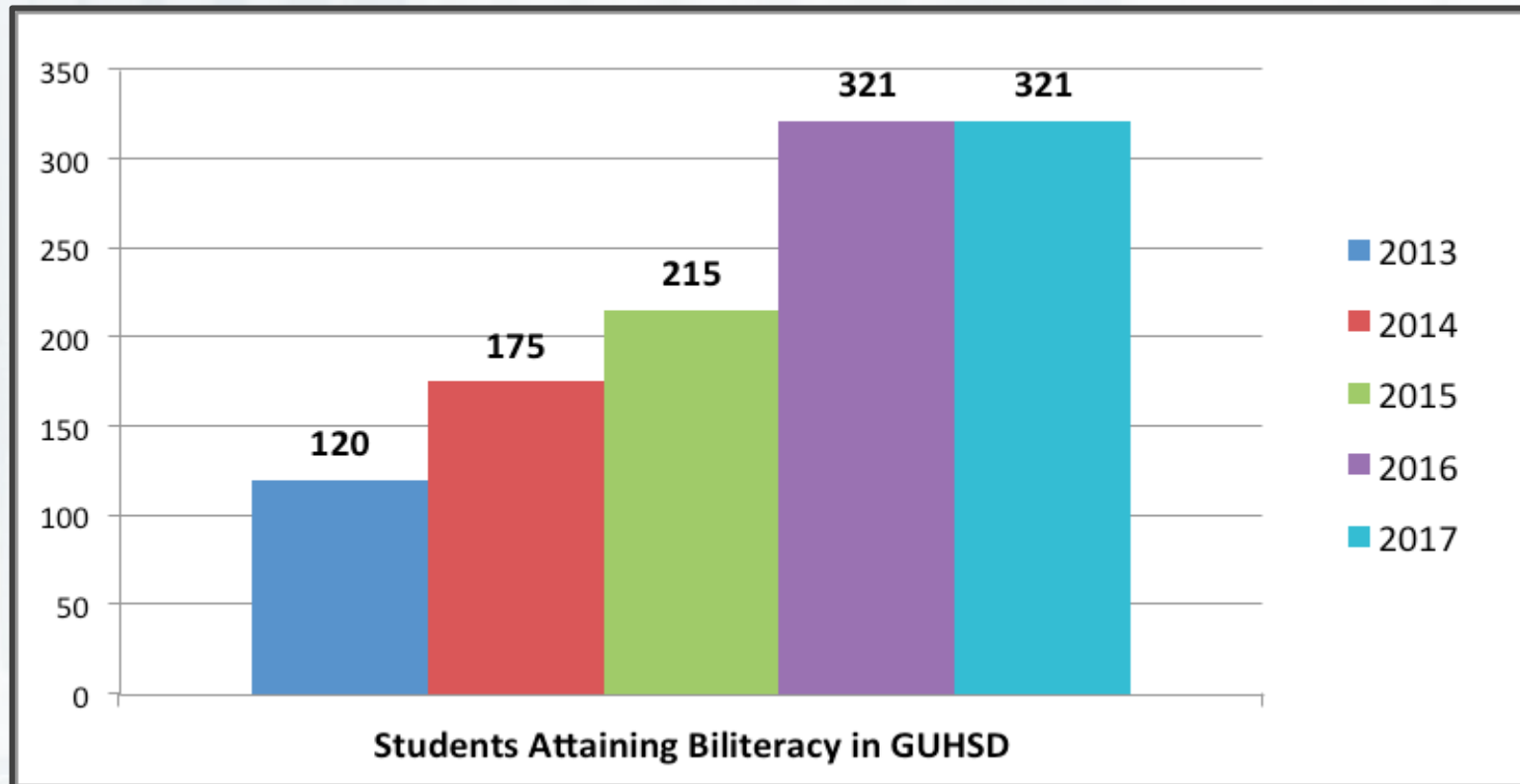
High School – EL Enrollment History



High School – Languages in the GUHSD

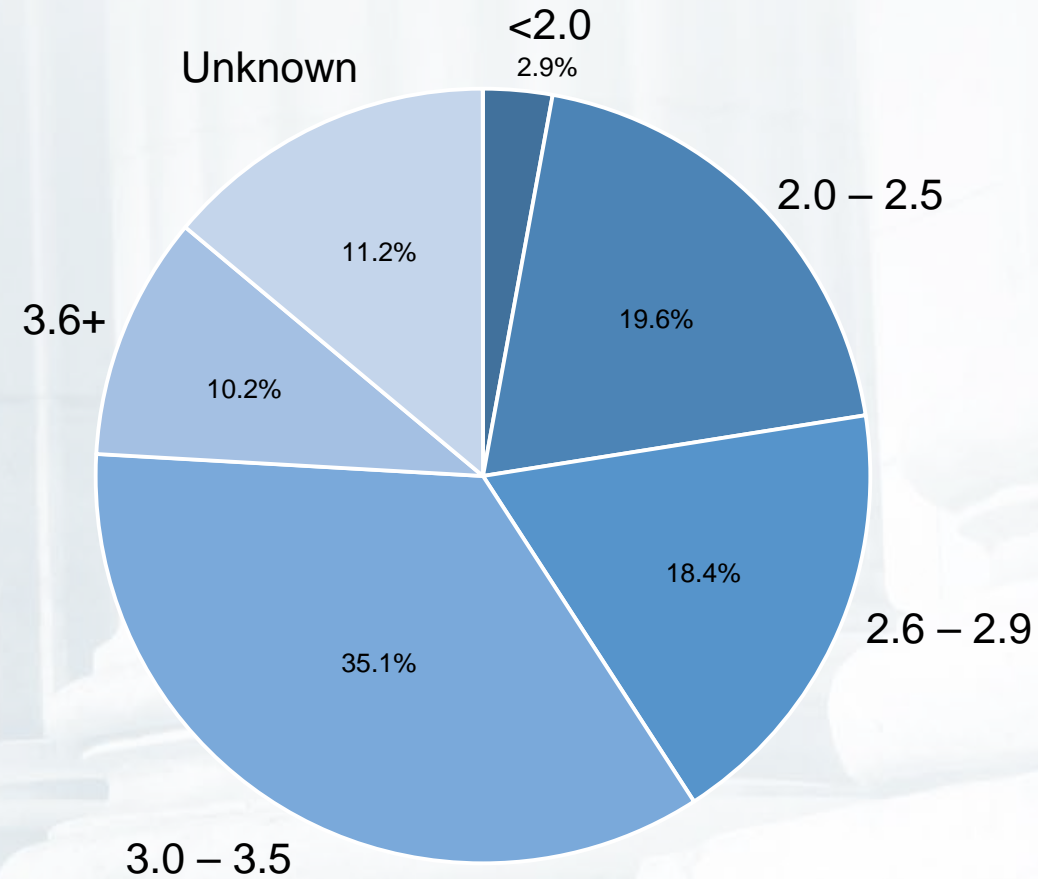


High School – Attaining Biliteracy



2,909 students graduated from GUHSD in 2017 and enrolled at GCCCD in Fall 2017

College – High School GPA



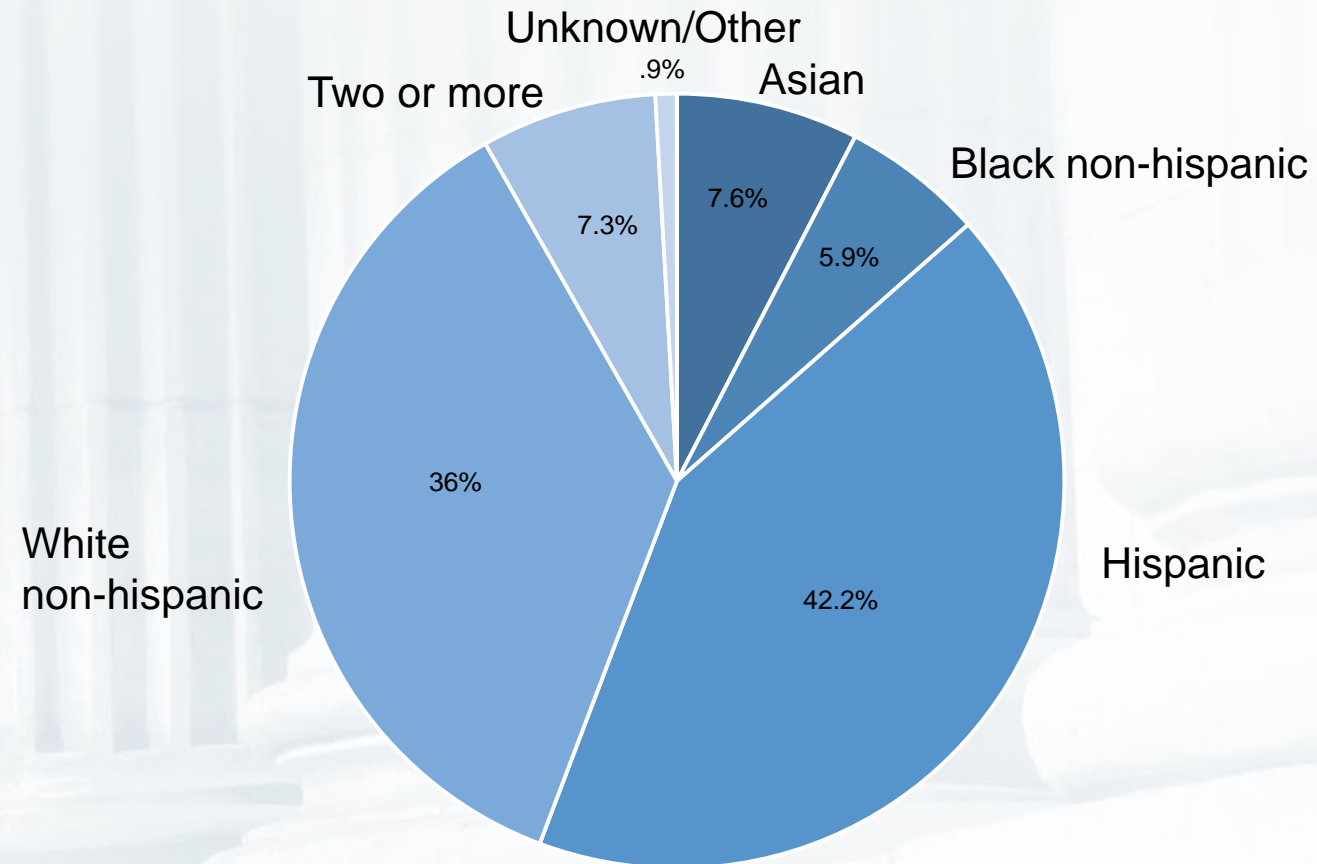
College -Economic Status

- **63.2%** received income-based BOG waivers

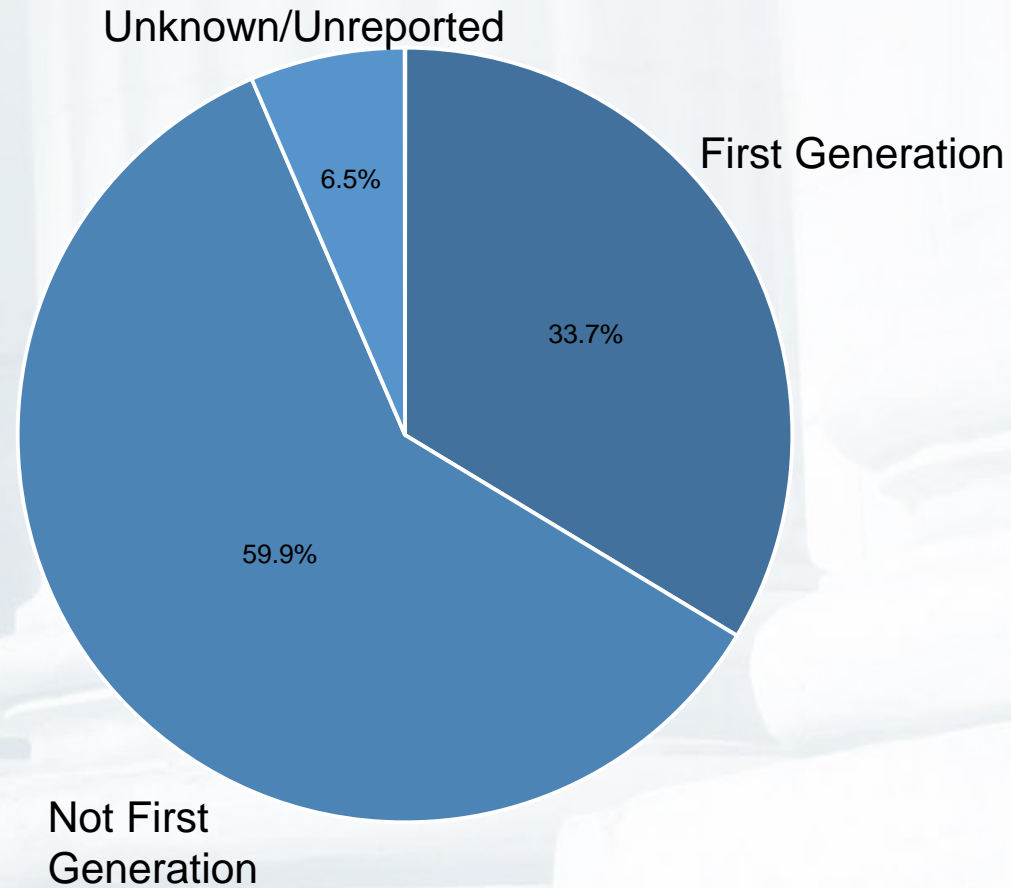
Family Size	Base Year Income
1	\$17,820.00
2	\$24,030.00
3	\$30,240.00
4	\$36,450.00
5	\$42,660.00
6	\$48,870.00
7	\$55,095.00
8	\$61,335.00
Each Additional Family Member	\$6,240

- These standards are based upon the federal poverty guidelines, as published each year by the US Department of Health and Human Services. Under Title 5 of the California Code of Regulations, the student or student's family must have a total income in the base year (in this case, 2015) that is equal to or less than 150% of the U.S. Department of Health and Human Services Poverty Guidelines based on family size.

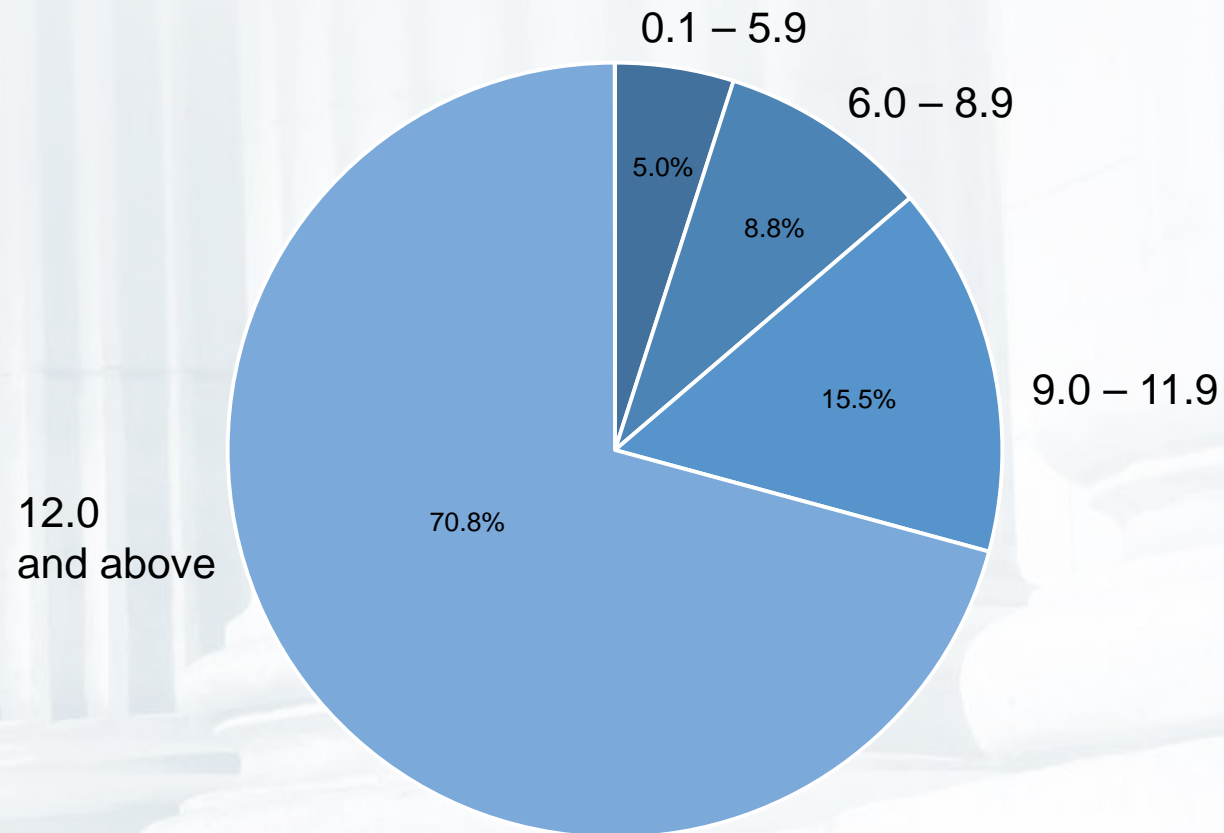
College - Ethnicity



College - First-Generation Status



College - Attempted Units at GCCCD



Student Panel Discussion

Cindy Miles, Tim Glover

East County Education Alliance Summit 2017

Pillars and Pathways

Promises and Pathways

Theresa Kemper, Aiden Ely

Promises and Pathways

Goals of the East County Education Alliance

Goal #1: Inspire Students to Focus on College and Careers

- Increase the number of students who:
 - ♦ Actively engage in a college or career pathway, and
 - ♦ Graduate from high school well prepared to enter and succeed in college

Goal #2: Foster Collaboration between our Districts to Provide a Seamless Transition from High School to College

- Strengthen the institutional capacities of the partnership by:
 - ♦ Aligning curriculum, programs and services, and
 - ♦ Expanding financial resources

Goal #3: Improve College Completion Rates and Prepare Students for an Ever-Evolving Workforce

- Increase the number of students who:
 - ♦ Earn a degree or certificate
 - ♦ Transfer to a university, and
 - ♦ Enter the workforce

Promises and Pathways

Existing Partnership Efforts

- Developed collaborative partnership
- Created Mission, Vision, Goals
- Learning about Promise Programs, Best Practices, Dual Enrollment
- Coordinated outreach, supported by grant
- High School visits
- College visits (Promise Fridays)
- Meetings with high school principals
- Establish liaison with each high school

Promises and Pathways

Existing Partnership Efforts

- Offered joint summer school Calculus course
- Piloting college visits for high school sophomores
- Continuing East County Chamber of Commerce Jobs/Internship board
- Developed articulation process information for teachers, students, parents, counselors
- Formalized Adult Education Consortium by developing the updated East Region Adult Education Governing Board, including the GUHSD, GCCCD, and Mountain Empire School District

Promises and Pathways

Existing Partnership Efforts

- Providing opportunities for high school students to graduate from high school with a college transcript
 - ♦ Dual enrollment opportunities after school
 - ♦ Exploring opportunities to provide dual enrollment during the high school day
 - ♦ Articulated courses: 19 courses, 55 high school sections
- Defined Higher Edge Promise
 - ♦ Allows high school students to attend community college fee-free right after high school

Promises and Pathways

Existing Partnership Efforts

- Higher Edge Promise

- ♦ Graduates from GUHSD high schools, class of 2019
- ♦ Attain GPA of 2.0 or higher
- ♦ Complete FAFSA
- ♦ Participate in college outreach opportunities like Got Plans
- ♦ Participate in college readiness process/program
- ♦ Attend community college semester after high school graduation

Promises and Pathways

- **AB 19 The College Promise (Jan. 2018)**

- Allows elimination or reduction of fees for new, full-time student for an entire academic year
- Not automatic for Colleges to participate
 - ♦ Participate in the CCC Guided Pathways Grant Program
 - ♦ Partner with local school districts to prepare students for college life and responsibilities
- Student: Enroll full-time; Submit FAFSA/Dream Act

- **California Promise Grant (Spring/Fall 2018)**

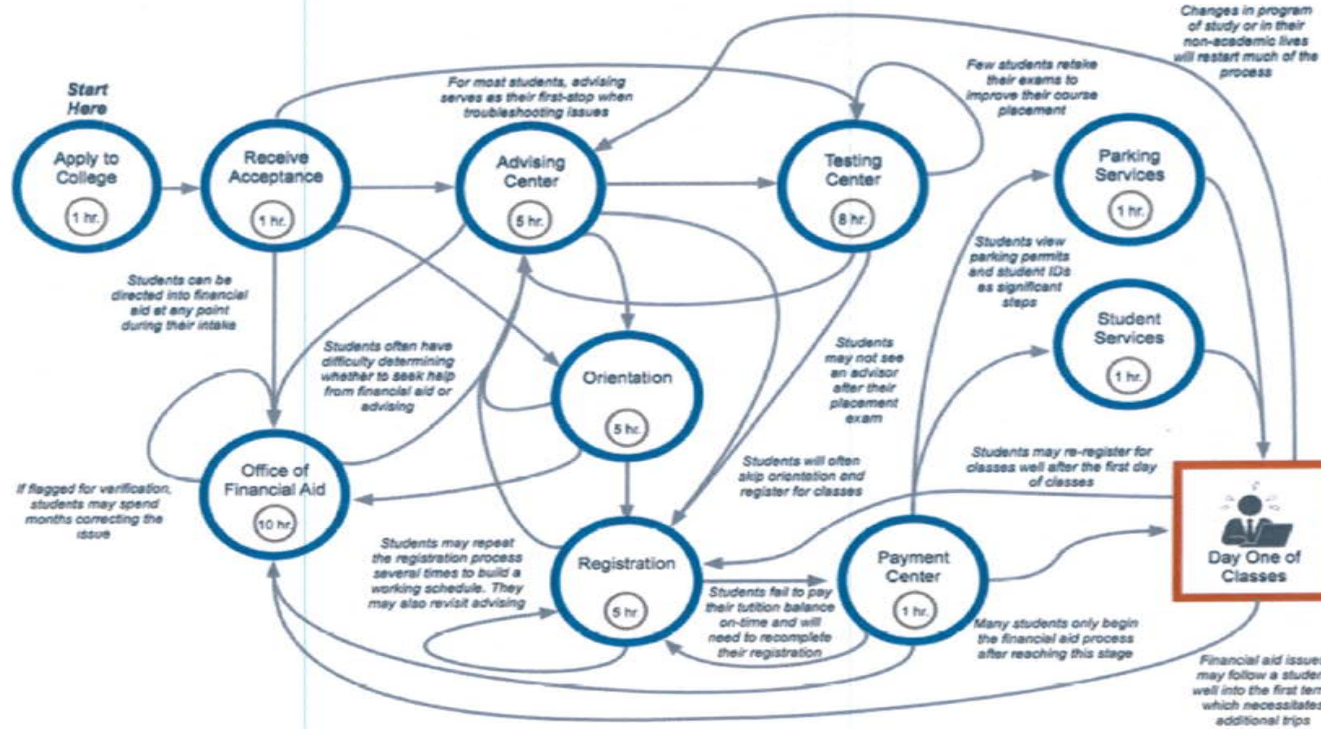
- Formerly known as the Board of Governors Fee Waiver
- **Not** the “California Promise”

Guided Pathways

The Why

- A little history
 - ◆ Student Success Task Force Final Report 2011
 - ◆ SB 1456 - Student Success and Support Act 2012
 - ◆ Student Equity funding 2014
- Designed really well for access
- Completion of degrees, certificates and transfer is still about 50% (six year cohort)
- Still have equity gaps

Students' Perspective



Source: Education Advisory Board, Community College Forum 2014

Guided Pathways

- Three Pathways Initiatives

- **AACC Pathways Project**

- 2015 30 colleges nationwide (3 CA community colleges)

- **California Guided Pathways Demonstration Project**

- 2017 20 California Community Colleges
 - competitive application process
 - Operated through the Foundation for CA Community Colleges

Funding by College Futures Foundation, the Bill & Melinda Gates Foundation, the James Irvine Foundation, and the Teagle Foundation, in addition to fees paid by participating colleges

- **California Community Colleges Guided Pathways**

- 2017 All 114 CA Community Colleges eligible
 - \$150 million over 5 years (one time funding) CCCCO

Guided Pathways

The idea behind guided pathways is straightforward.

College students are more likely to complete a degree in a timely fashion if they:

- choose a program and develop an academic plan early on that is career related,

- have a clear road map of the courses they need to take to complete a degree, certificate or transfer, and

- concurrently receive guidance and support to help them stay on plan.

Guided Pathways

A Few Pathways Design Principles

- Develop clear, educationally coherent program maps—which include specific course sequences, progress milestones, and learning outcomes.
- Map backwards from careers or fields of interest by organizing programs into “meta-majors” or “exploratory majors” with default introductory curricula.
- Require every student to have a clear roadmap to completion, further education and job advancement.
- Redesign the new student intake process to help entering students who undecided about a major to choose a field of study as quickly as possible. Undecided students must choose a meta-major that is later refined at a prescribed milestone.

Guided Pathways

A Few Pathways Design Principles

- Integrate teaching of foundation skills into college-level gatekeeper courses for major program areas to enable academically unprepared students to successfully enter a program of study as soon as possible.
- Monitor student progress on their program plans, providing frequent feedback and intervening with support as needed.
- Help students with career exploration and goal-setting from the start.
- Build bridges into college programs from high schools (as opposed to preparing students for college generally).

Promises and Pathways

• The Four Pillars of Guided Pathways



1.
Create clear curricular pathways to employment and further education.



2.
Help students choose and enter their pathway.



3.
Help students stay on their path.



4.
Ensure that student learning is happening with intentional outcomes.

Guided Pathways

- **The Pillars Table Top Activity**

- I - CLARIFY THE PATHS
 - II - HELP STUDENTS GET ON A PATH
 - III - HELP STUDENTS STAY ON THEIR PATH
 - IV - ENSURE STUDENTS ARE LEARNING
- Brainstorm and record ideas on the flip chart paper for *new* or *improved* activities, services, processes or systems for any of the Pillars (20 min.)

THINK LIKE A STUDENT!

Guided Pathways

- Review all of your great ideas. Which ones do you feel would have the greatest impact on student success?
- Transfer your best “ideas” to the leaves corresponding to the constituent group you believe has primary responsibility for follow-up
- Hang your leaves on the Pillar that corresponds to that activity, service or process (10 mins.)
- **The Leaves**
 - **Green:** ECEA – Shared responsibility
 - **Orange:** GUHSD or High Schools
 - **Brown:** GCCCD or Community Colleges

Closing

Cindy Miles, Tim Glover